



**D·B·H·D·D**

Georgia Department  
of Behavioral Health  
& Developmental  
Disabilities

- BE D·B·H·D·D**
- BE COMPASSIONATE**
- BE PREPARED**
- BE RESPECTFUL**
- BE PROFESSIONAL**
- BE CARING**
- BE EXCEPTIONAL**
- BE INSPIRED**
- BE ENGAGED**
- BE ACCOUNTABLE**
- BE INFORMED**
- BE FLEXIBLE**
- BE HOPEFUL**
- BE CONNECTED**
- BE D·B·H·D·D**

1



DBHDD: Who are we, and  
who do we serve?

---

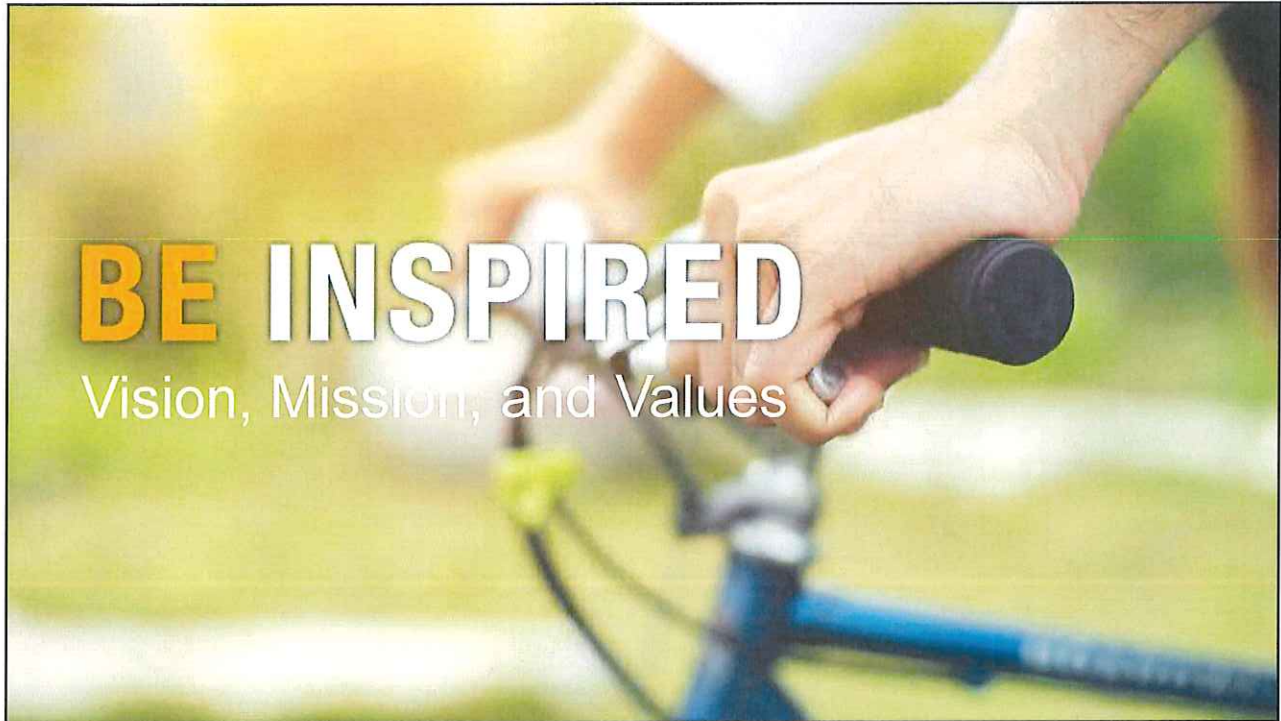
**BE D·B·H·D·D**

Georgia Department of Behavioral Health &  
Developmental Disabilities

Hetal Patel,  
Region 1 RSA



2



3

Vision

Easy access to high-quality care that leads to a life of recovery and independence for the people we serve

4

## Mission

Leading an accountable and effective continuum of care to support Georgians with behavioral health challenges, and intellectual and developmental disabilities in a dynamic health care environment

5

## DBHDD: Georgia's Public Safety Net

- State agency created in 2009
- Provides treatment and support services for
  - Mental health
  - Substance use disorders
  - Intellectual and developmental disabilities

Target population:

- people who are uninsured, underinsured, or on Medicaid

6

## New Health Paradigm transformation of DBHDD

- Department of Justice and the State of Georgia enter into a settlement agreement
- The agreement required the department to move from an institutional system of care to a community based system of care.
- 2011 NWGRH closes and DBHDD embarks on a new way of doing business in the state of Georgia beginning with Region One.

7

## Preparing for a Community Based System of Care

- The Department began rolling out ADA community services per the DOJ settlement

8

### Adult Mental Health and Substance Abuse Services

- DBHDD provides a wide array of services for adults with mental illness and/ or substance abuse issues.
- Those services are categorized as
  - Core Services
  - Specialty Services

9

### Public Safety Net

**STATE OFFICE**  
2 Peachtree St, Atlanta

**25 Community Service Boards**

**6 REGIONS**

Regions contain field offices with resources serving the community (i.e., integration homes and providers)

**REGIONAL HOSPITALS**

- Georgia Regional Hospital at Savannah  
 SAVANNAH
- Georgia Regional Hospital at Atlanta  
 ATLANTA
- East Central Regional Hospital  
 AUGUSTA
- West Central Georgia Regional Hospital  
 COLUMBUS
- Central State Hospital  
 MILLEDGEVILLE

10

## Department of Justice ADA Settlement Agreement 2010

- The Settlement Agreement set forth the following services for individuals in the target population to be in place by July 2015:
  - Assertive Community Treatment (ACT)
  - Community Support Teams
  - Intensive Case Management
  - Case Management
  - Crisis Service Centers
  - Crisis Stabilization Units
  - Community Hospital Beds
  - Crisis Line
  - Mobile Crisis Services
  - Crisis Apartments
  - Housing Supports
  - Supported Employment
  - Peer Support Services

11

## Community Behavioral Health Services

### Core and Specialty Services

- Assessment
- Medication
- Crisis Intervention
- Individual, Family, and Group Support
- Case Management
- Intensive Case Management
- Psychosocial Rehabilitation
- Substance Use Treatment
- Medicaid assisted Treatment Programs
- Peer Support
- Assertive Community Treatment
- Community Support Teams
- Residential Support
- Supported Employment
- Peer Respite/Recovery CentersC

### • Crisis Services

- Mobile Crisis Response
- Behavioral Health Crisis Centers
- Crisis Stabilization Units
- Crisis Respite Apartments

12

## Community Service Boards (CSBs)

- Part of Georgia’s public system of care for behavioral health
- Georgia’s public “safety net” for behavioral health (providing coverage for all 159 counties)
- Boards appointed by county commissions in their catchment area

13

## Community Service Boards

- |  |  |
|--|--|
| <ul style="list-style-type: none"> <li>• Advantage Behavioral Health Systems</li> <li>• Aspire Behavioral Health &amp; Developmental Disability Services</li> <li>• Avita Community Partners</li> <li>• Clayton Center CSB</li> <li>• Cobb-CSB</li> <li>• Douglas CSB</li> <li>• CSB of Middle Georgia</li> <li>• DeKalb CSB</li> <li>• Fulton County Behavioral Health</li> <li>• Gateway BHS</li> <li>• Georgia Pines CSB</li> <li>• Haralson BHS</li> <li>• Highland Rivers Health</li> </ul> | <ul style="list-style-type: none"> <li>• Lookout Mountain Community Services</li> <li>• McIntosh Trail CSB</li> <li>• Middle Flint BHC</li> <li>• New Horizons Behavioral Health</li> <li>• Oconee Center CSB</li> <li>• Pathways CSB</li> <li>• Phoenix Center CSB</li> <li>• Pineland BHDD</li> <li>• River Edge Behavioral Health Center</li> <li>• Serenity Behavioral Health System</li> <li>• BHS of South Georgia</li> <li>• Unison Behavioral Health</li> <li>• View Point Health</li> </ul> |
|--|--|

14

## Providers by DBHDD Region 1

### Region 1 (Blue)

- Avita Community Partners
- Cobb CSB
- Douglas CSB
- Haralson Board of Health
- Highland Rivers Health
- Lookout Mountain Community Services



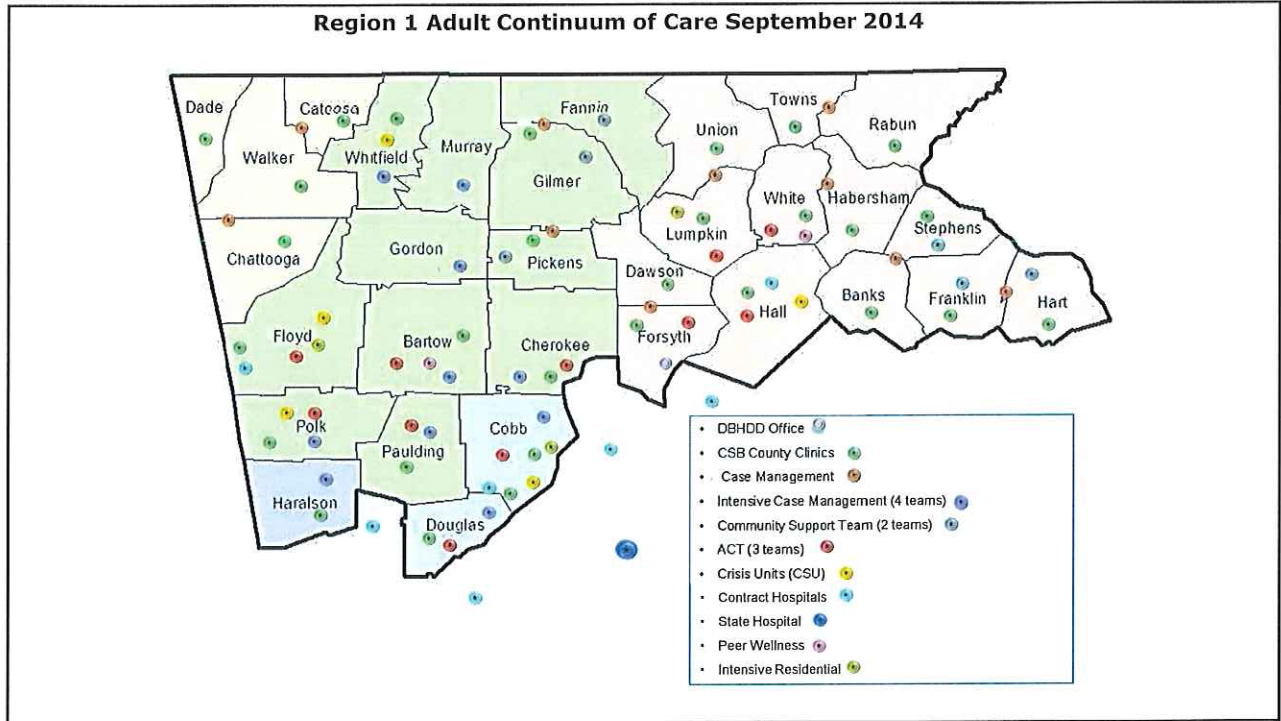
15

### Contacts:

- Highland Rivers Health [800-729-5700](tel:800-729-5700)
- Lookout Mountain Community Services [706-806-1222](tel:706-806-1222)
- Cobb CSB [770-422-0202](tel:770-422-0202)
- Avita Community Partners [800-525-8751](tel:800-525-8751)
- Douglas Community Service Board [770-949-8082](tel:770-949-8082)
- Haralson Behavioral Health Services [770-537-2367](tel:770-537-2367)

16





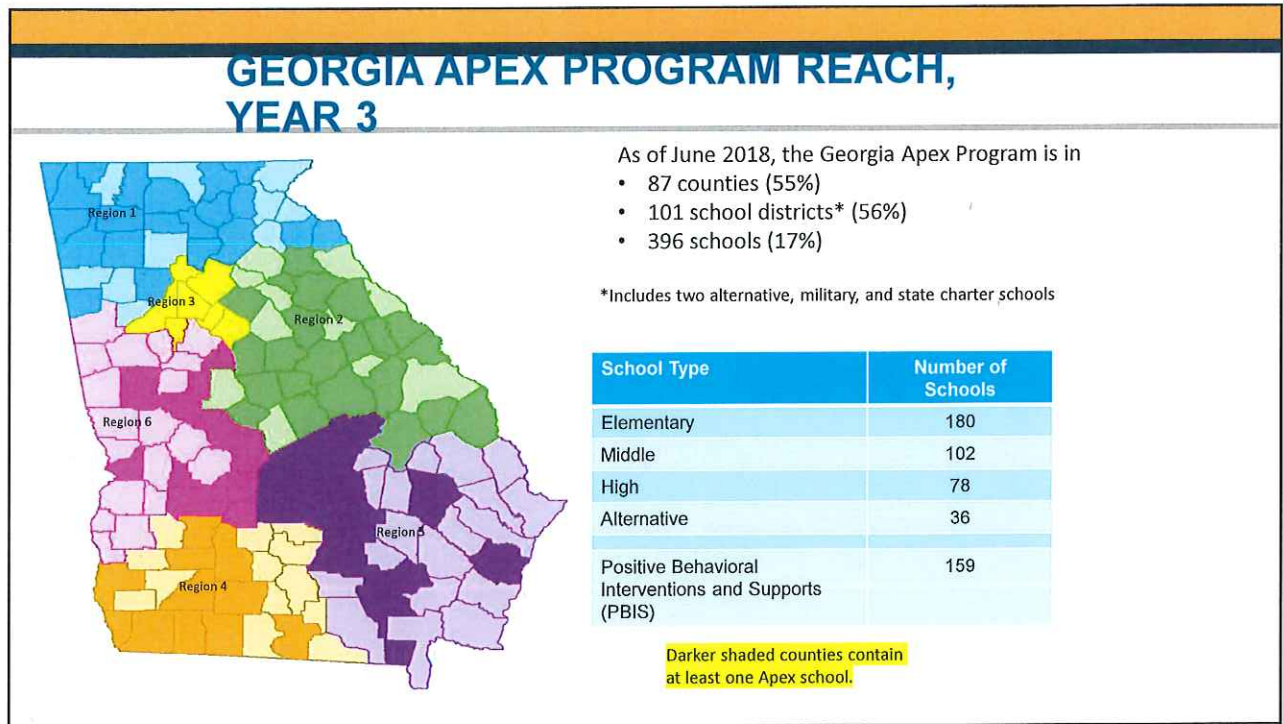
17

## APEX YEAR 3 - BY THE NUMBERS

- 29 providers
- 396 schools engaged; 309 schools served
- 3,464 students who had not previously received mental health services
- 288 first-time students served each month\*
- 27 students served per school\*
- 60,318 services provided in schools
- 15,635 referrals made to Apex services

\*averaged data

18



19

## Current IFI providers

Intensive Family Intervention services are short-term, family-focused, and community-based services. It is a team-based approach to help families cope and maintain children with their families, or to reunify them.

11 Intensive Family Intervention providers are serving region 1

Cornerstones Counseling

Empowering Youth 4 Positive Change

Bethany Christian Services

20

## C & A Core and Specialty Services

Bethany Christian Service  
 Empowering Youth 4 Positive Change  
 ProFamily  
 Avita  
 GA Hope  
 Health Connect America

21

## Addiction Recovery Support Center

The Mosaic Place	321 West Ave Cedartown, GA 30125	Lydia Goodson	<a href="mailto:lydiagoodson@highlanddrivers.org">lydiagoodson@highlanddrivers.org</a>	404-989-9163
LivingProof Recovery	408 Shorter Avenue NW, Rome, GA 30165	Claudia Hamilton	<a href="mailto:claudia@livingproofrecovery.org">claudia@livingproofrecovery.org</a>	706-204-8710
RCFF - The Connection	608 Veterans Memorial Boulevard Cumming, Georgia 30040	Bill Whitney	<a href="mailto:bill@theconnection">bill@theconnection</a>	470-253-8564
J's Place Recovery Center	1362 Juanita Ave, Gainesville, GA 30501	Jordan Hussey	<a href="mailto:executive.director@jsplacerecovery.org">executive.director@jsplacerecovery.org</a>	678-316-0403

22

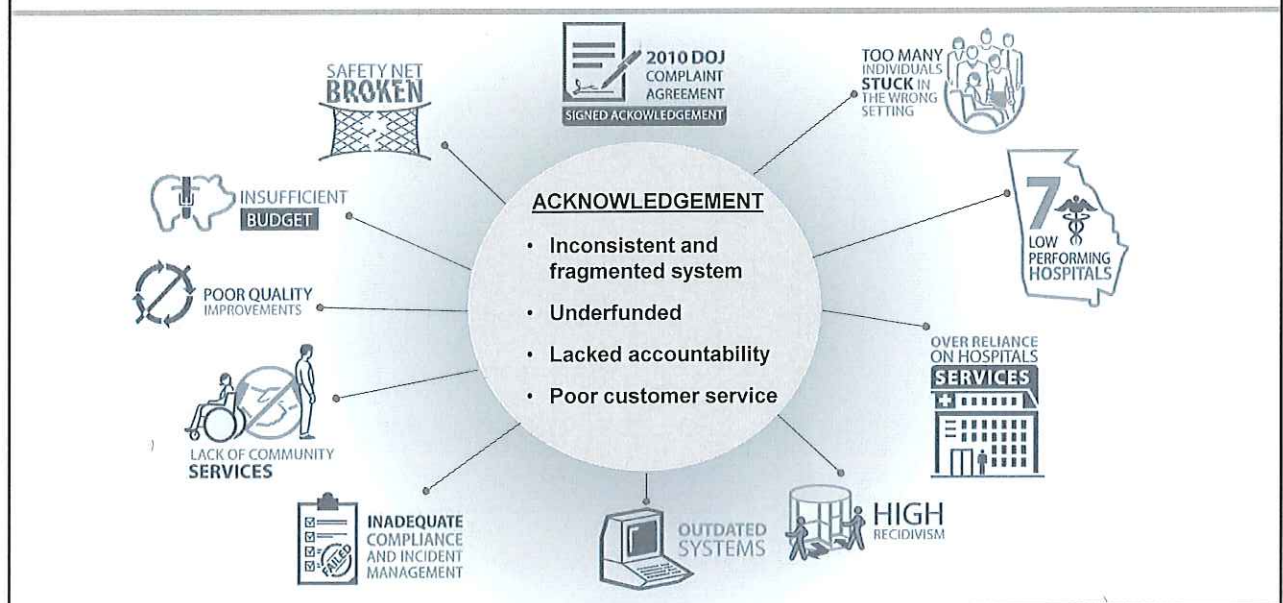
## Our History

# 2009 – 2019: A Decade of Transformation

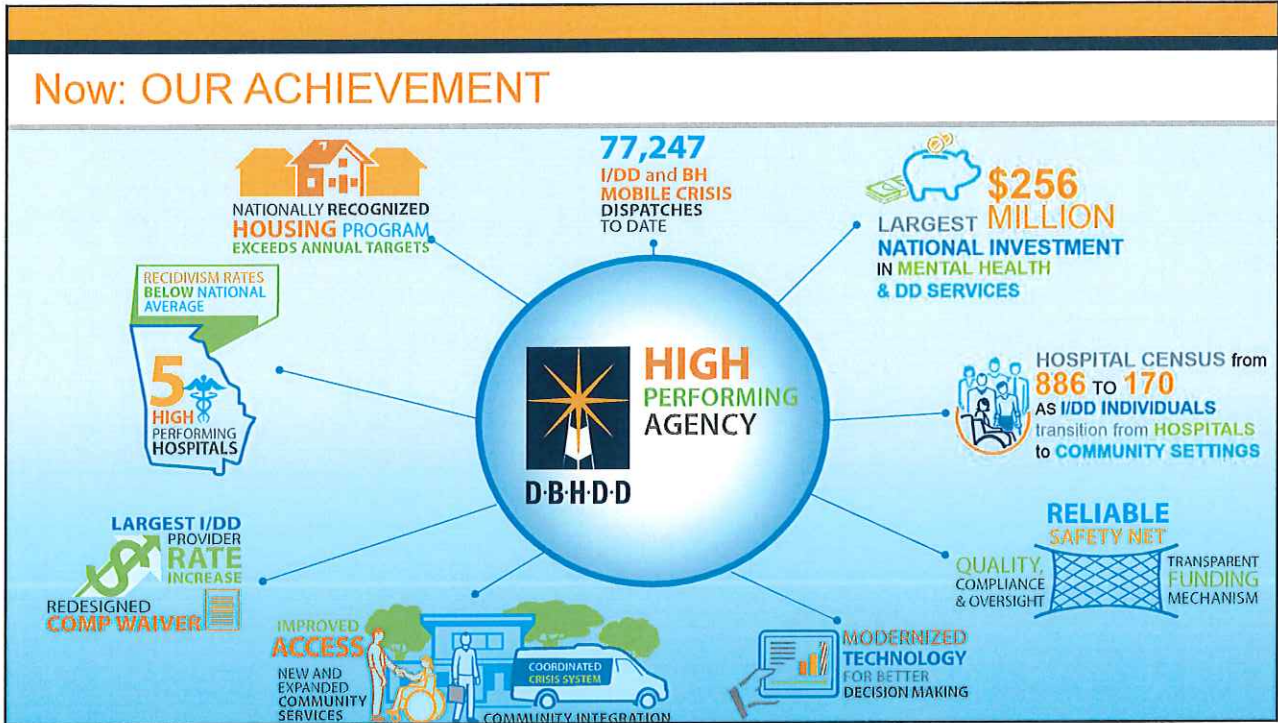
## Serving Georgia's Most Vulnerable Citizens

23

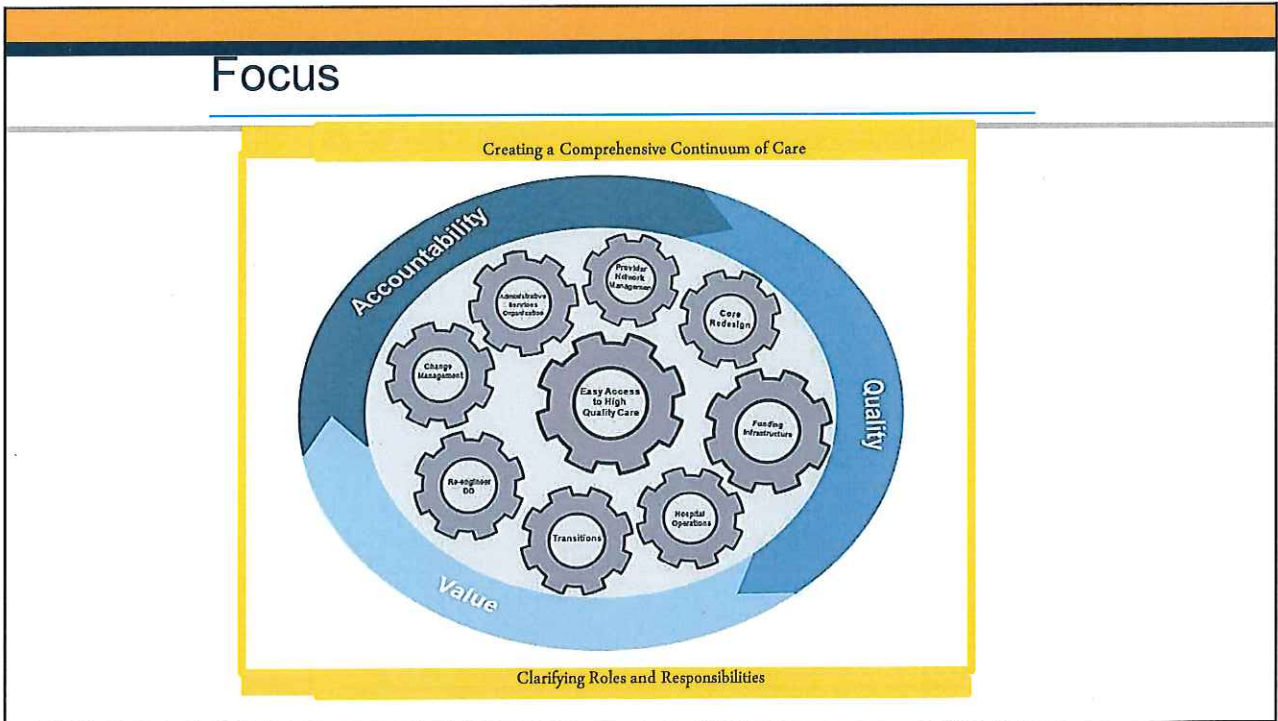
## Then: 2009...A New Department is Formed



24

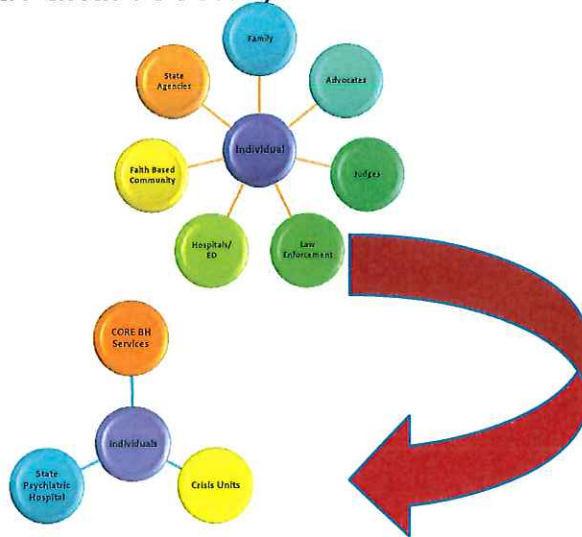


25



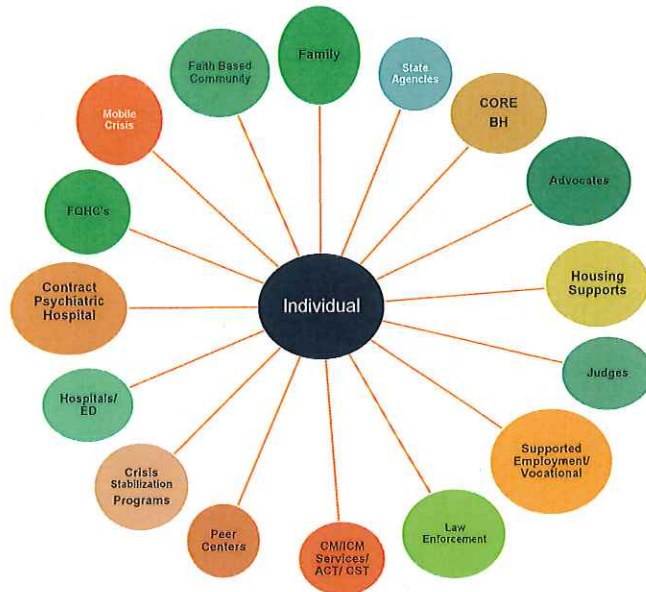
26

Although many of you touched the lives of individuals, there were few options for you to connect with until recently:



27

### Community Based System of Care



28

## Georgia Crisis and Access Line

- 24 hours a day, 7 days a week
- Text capabilities
- Statewide (159 counties)
- Mobile crisis response
- Behavioral health crisis centers
- Provider referrals
- Free and confidential



29

## Emotional support line

Georgia Covid-19 Emotional Support line  
866-399-8938

30

## 2 x 2 Series

- The Department of Behavioral Health and Developmental Disabilities and the Department of Public Health invite you to participate in our **2x2 Series: Daily Self-Care Tips and Support for Health Care and Emergency Response Workers**. These Webex events are designed to provide daily self-care tips and support for health care and emergency response workers. Each session will provide attendees with mental health tips about managing stress, grief, work/life balance, and wellness.
- If you cannot attend the live sessions, each one will be recorded and available for review on the DBHDD website: <https://dbhdd.georgia.gov/2x2-series>

31

## So as you leave today:

- We hope you are more informed on what is available and how to access it.
- We hope that you will share this information with other community partners
- KNOW WHO TO CALL

32



Behavioral Health				
Region 1 contact				
Services	Staff	Email	Office	Cell
Services for Children, Youth and Family	Tawanda Scales	<a href="mailto:tawanda.scales@dbhdd.ga.gov">tawanda.scales@dbhdd.ga.gov</a>	770-781-6852	404-291-4309
Crisis Services (CSUs/BHCC/SCB)	Nakita Robinson	<a href="mailto:Nakita.Robinson@dbhdd.ga.gov">Nakita.Robinson@dbhdd.ga.gov</a>	<a href="tel:770-781-6849">770-781-6849</a>	<a href="tel:404-295-6820">404-295-6820</a>
Community Bases Services (ACT/ICST/ICM/CM/SE)	Rebecca Coursey	<a href="mailto:Rebecca.coursey@dbhdd.ga.gov">Rebecca.coursey@dbhdd.ga.gov</a>	678-947-2818	706-331-3133
GHVP	Scarlett Freelin	<a href="mailto:Scarlett.Freelin@dbhdd.ga.gov">Scarlett.Freelin@dbhdd.ga.gov</a>	678-947-2814	706-728-0412
Residential Services in the Community (ITRs/CRR/PATH)	Renee Funk-Barbacone	<a href="mailto:renee.barbacone-funk@dbhdd.ga.gov">renee.barbacone-funk@dbhdd.ga.gov</a>	678-947-2811	404-360-2757
Services in the state hospitals and transitions	Deborah Fujan-Pinney	<a href="mailto:deborah.fujan-pinney@dbhdd.ga.gov">deborah.fujan-pinney@dbhdd.ga.gov</a>	770-781-6848	404-293-2062
All issues	Hetal Patel	<a href="mailto:hetal.patel@dbhdd.ga.gov">hetal.patel@dbhdd.ga.gov</a>	770-781-6802	404-327-2310

33

Questions?

**BE D·B·H·D·D**

Georgia Department of Behavioral Health & Developmental Disabilities

**DBHDD**

34